



Newark &  
Sherwood CVS



Newark and Sherwood  
Clinical Commissioning Group

# PPG Networking Meeting

18 September 2018

Fernwood Village Hall, Rubys Ave,  
Fernwood, Newark NG24 3RS



Newark &  
Sherwood CVS



Newark and Sherwood  
Clinical Commissioning Group

# Welcome, introductions housekeeping & networking



# Understanding Newark & Sherwood CCG and its Patient and Public Engagement Committee (PPEC)



**Julie McIntyre, PPEC Chair**

# NHS Newark and Sherwood CCG

- Collaboration of 14 member practices
- Managed a budget of £193 million for health care services for population of Newark & Sherwood 2017/18
- Governing Body made up of GPs, CCG executives and lay members
- Shared management team based at Balderton Primary Care Centre and Birch House, Mansfield
- [www.newarkandsherwoodccg.nhs.uk](http://www.newarkandsherwoodccg.nhs.uk)

NHS Newark & Sherwood CCG &  
NHS Mansfield & Ashfield  
Governing Bodies

Better Together  
Board

Quality, Risk &  
Safeguarding Committee

Patient and Public Engagement  
Committee (PPEC)

Patient Participation Groups (8)  
Mansfield North  
Mansfield South  
Ashfield North  
Ashfield South  
Newark  
Sherwood

Healthwatch  
Nottinghamshire (1)

Community and  
Voluntary Service (3)

Local Authority  
elected members (3)

Special Interest Groups (8)  
Cancer  
Carers  
Diabetes  
Maternity & Families  
Mental Health  
Disability  
LGBTQ+  
Young People

Protected characteristics  
Age  
Disability  
Gender reassignment  
Marriage and civil  
partnership  
Pregnancy and maternity  
Race  
Religion or belief  
Sex  
Sexual orientation

C  
I  
T  
I  
Z  
E  
N  
S  
  
C  
O  
U  
N  
C  
I  
L

PPEC Health and Wellbeing Forum

All Patient  
Participation Group  
members

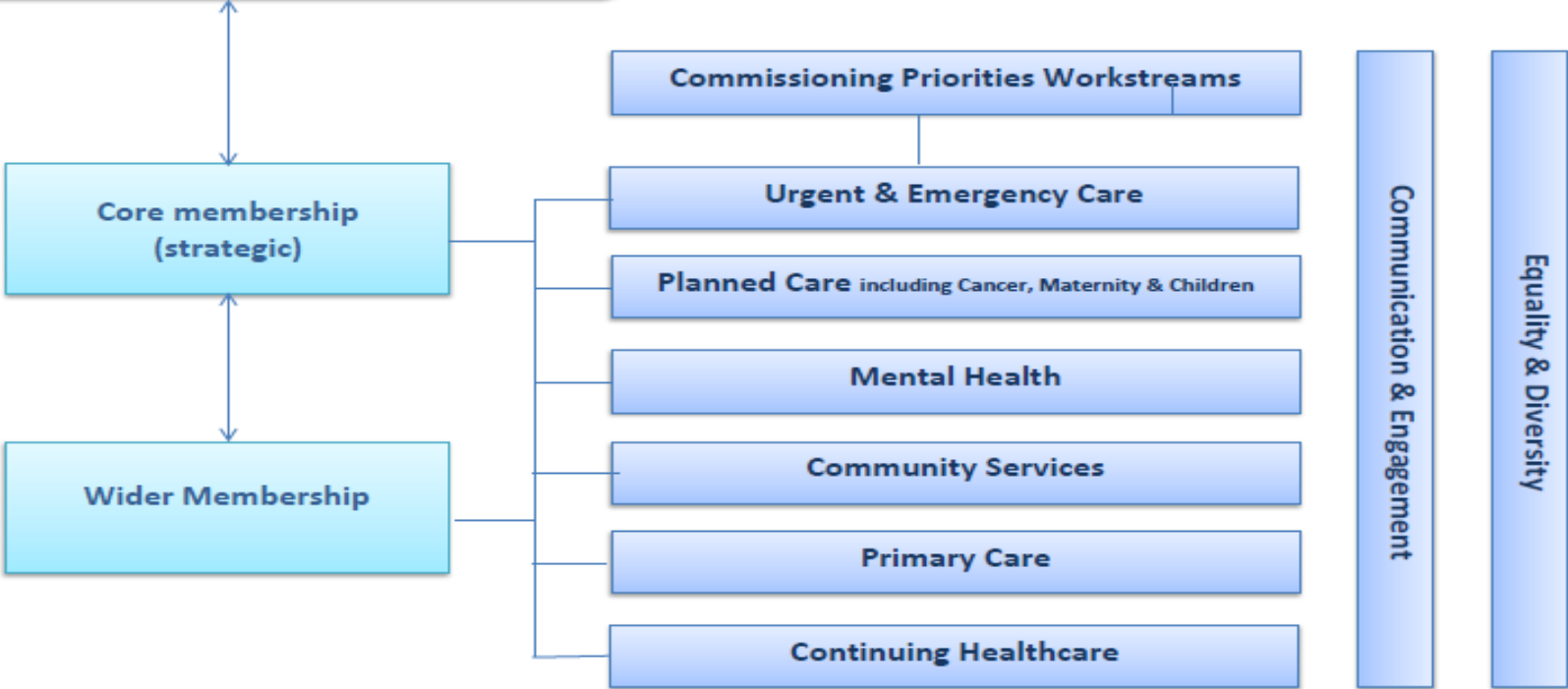
Place based community  
groups eg U3A

Health related  
groups

Trust  
memberships

Other groups  
including virtual  
groups

# Patient and Public Engagement Committee



**Patient Participation  
Groups (6)**

**Newark**

**Sherwood**

Mansfield North  
Mansfield South  
Ashfield North  
Ashfield South

**Newark (6)**

Barnby Gate Surgery  
Fountain Medical Centre  
Lombard Medical Centre  
Collingham Medical Centre  
Balderton Primary Care  
Centre  
Hounsfield Surgery

**Sherwood (8)**

Abbey Medical Group  
Rainworth Health Centre  
Bilsthorpe Surgery  
Hillview Surgery  
Middleton Lodge Surgery  
Sherwood Medical  
Partnership  
Major Oak Medical Practice  
Southwell Medical Centre





# What is the role and function of PPEC?

- Strategic group to put patients, public & carers at centre of both CCGs
- Provide the patient and public perspective in **the planning and commissioning** of health and care services for the CCG areas
- inform and improve the quality and cost effectiveness of local CCG commissioned services
- Two way process of feedback between Governing Body and Quality, Risk & Safeguarding Committee

## PPGs

- Generating ideas/testing ideas
- Promoting consistent approaches across practices
- Raising awareness amongst practice population

## PPEC

- Work plan aligned to CCG priorities
- Design of approaches to engage as widely as possible

## Forum

- Engagement aligned to PPEC work plan
- Disseminating messages as widely as possible to groups, network and individuals





Newark &  
Sherwood CVS



Newark and Sherwood  
Clinical Commissioning Group

# Introducing your PPEC Locality Representatives;

**Jim Barrie & Mary Hodgeon**



Newark &  
Sherwood CVS



Newark and Sherwood  
Clinical Commissioning Group

# Workshop;

Developing Communication Pathways  
between PPEC and your PPG



Newark and Sherwood  
Clinical Commissioning Group

# Bowel Cancer Screening

Jonathan Stevens, Facilitator  
East Midlands Cancer Research UK



Newark &  
Sherwood CVS



*Newark and Sherwood  
Clinical Commissioning Group*

# Plenary Session



Newark &  
Sherwood CVS



Newark and Sherwood  
Clinical Commissioning Group

# Evaluation and Close